



A home filled with love.

At the Seattle Ronald McDonald House and the Ronald McDonald House at the Alaska Native Medical Center in Anchorage, we offer the comforts of home and support services to families of seriously ill children near the medical care they need.

Each family has a private room and access to a stocked food pantry, laundry facilities, linens, toiletries, therapy dogs, and more. Meals are prepared daily for families to eat in the dining room or take back to the hospital.



joyful moments in difficult times

Families are able to **cope better**

& focus on the needs of the **sick child**

when they have support

from family members and other families

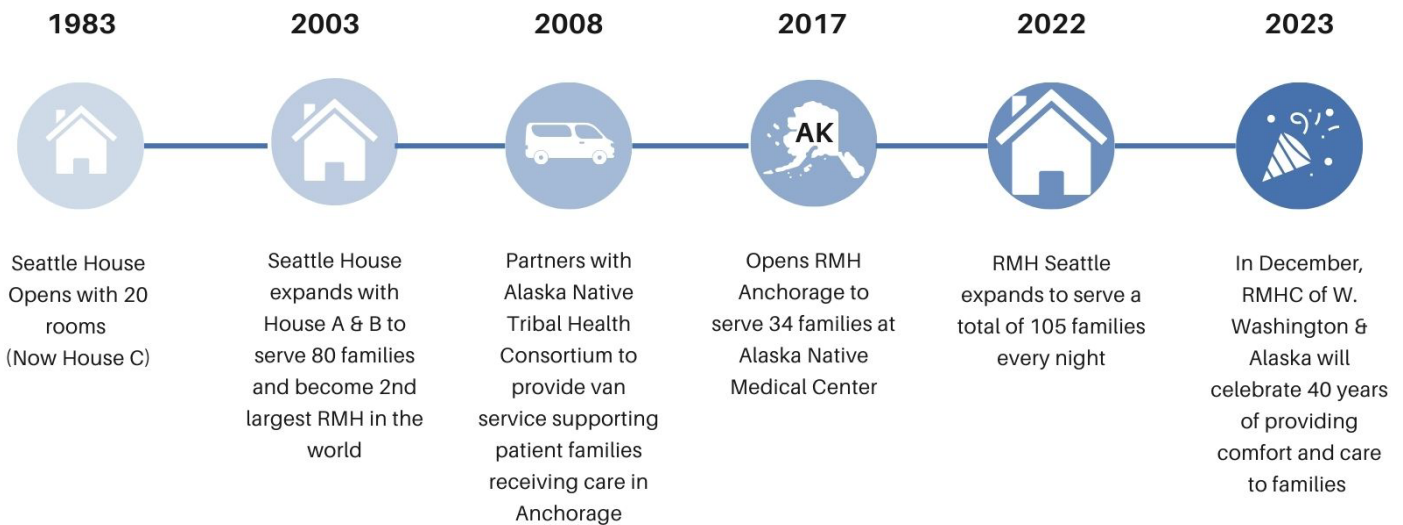


*Nabors et al., *Families, Systems, & Health* (2013)

Spreading *kindness* since 1983



"It is truly magical here. It is a place where your heart, mind, and family find rest. The hospital is treating my child's cancer, but the Ronald McDonald House is treating their heart and soul. 'Kindness' is the hallmark of the Ronald McDonald House. We feel it as a family, every day. We wouldn't be able to keep going without it." – Marotta family

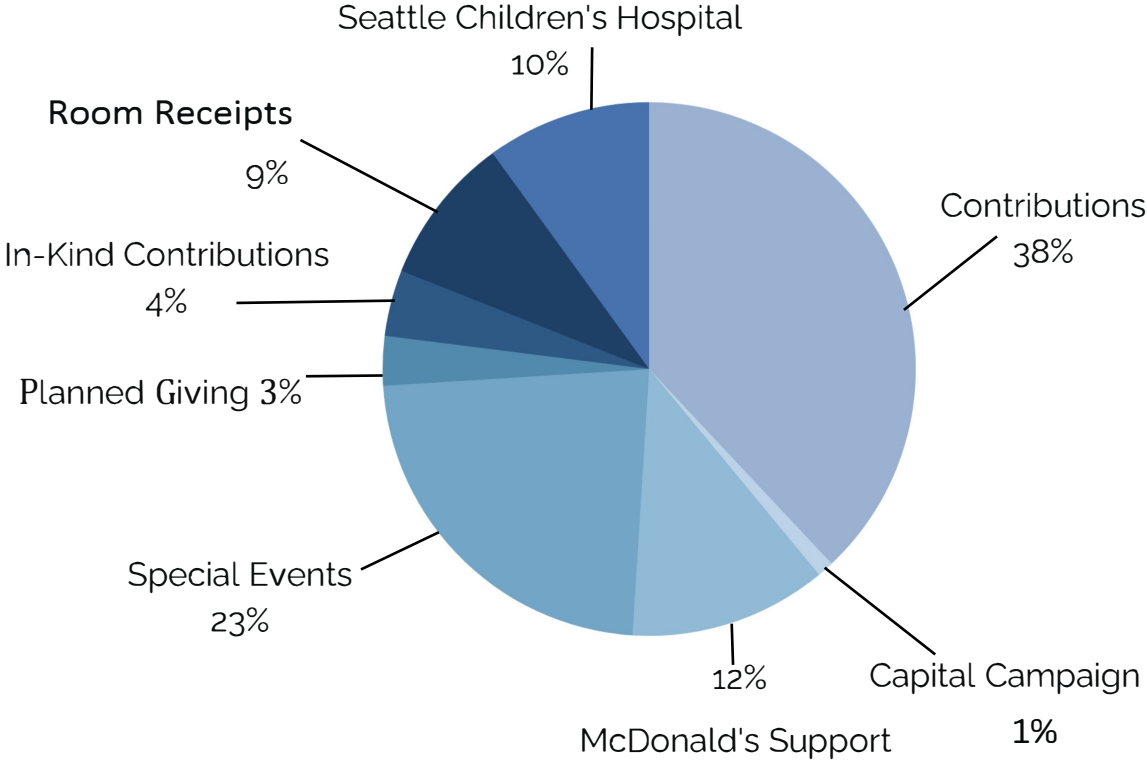


When a family faces a child's medical crisis the Ronald McDonald House provides a place to stay, meals, and support services so families can focus on taking care of their child.

"There was something about the playroom that would take her mind off being weak from the radiation." – Ruth Wilcox



2022 Operating Revenues: 5.3M



2022 Expenses: 5.5M

